

# Overview of GW Cancer Center Survivorship Resources

Aubrey Van Kirk Villalobos, MPH, MEd, DrPH(c)  
November 12, 2019

# The GW Cancer Center



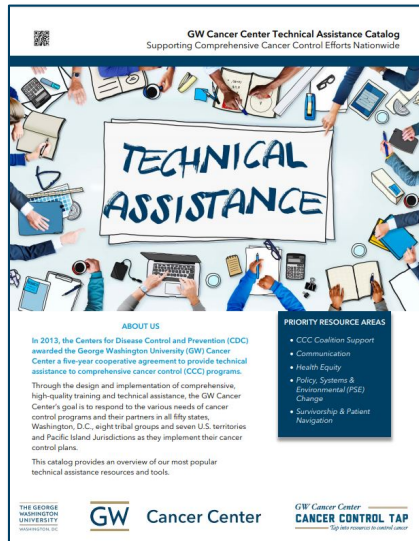
Our Vision:

A cancer-free world through groundbreaking research, innovative education and equitable care for all

Providing TAT to CCC programs and coalitions through CDC cooperative agreements since 2013

Project PI: Dr. Mandi Pratt-Chapman  
mandi@gwu.edu

# Technical Assistance & Training Resources



[bit.ly/CCCatalog2018](http://bit.ly/CCCatalog2018)

[bit.ly/GWCCTAPInfo](http://bit.ly/GWCCTAPInfo)

[www.CancerControlTAP.org](http://www.CancerControlTAP.org)



THE GEORGE  
WASHINGTON  
UNIVERSITY  
WASHINGTON, DC

GW Cancer Center

# Across Cancer Continuum – Social Media Toolkits

- **Adolescent and Young Adult Cancer**
  - Breast Cancer
  - **Cancer Survivorship**
  - Cervical Cancer
  - Colorectal Cancer
  - HPV Vaccine Myth Busting for Health Care Providers
  - Lung Cancer
  - Melanoma/Skin Cancer
  - Minority Cancer Awareness Week
  - National Cancer Control Month
  - National Cancer Prevention Month & World Cancer Day
  - **Palliative Care**
  - Prostate Cancer
  - Viral Hepatitis and Liver Cancer
- 
- Health Equity Toolbox - promote health equity resources for patients and providers via social media



[bit.ly/GWCCSMTKs](https://bit.ly/GWCCSMTKs)

[bit.ly/GWHealthEquityToolbox2018](https://bit.ly/GWHealthEquityToolbox2018)



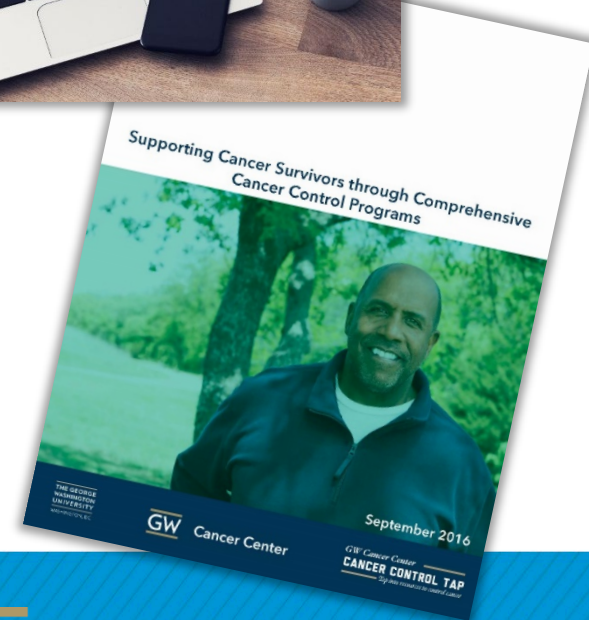
# Survivorship & Patient Navigation Capacity Building

1. Executive Training on Navigation and Survivorship
2. Oncology Patient Navigator Training: The Fundamentals

Visit: [GWCCacademy.org](http://GWCCacademy.org)

Supporting Cancer Survivors Through CCC Programs Guide

[bit.ly/2016SurvivorshipReport](http://bit.ly/2016SurvivorshipReport)



# Patient Navigation Tools

Advancing the Field of Cancer  
Patient Navigation

[bit.ly/PNPSEGuide](http://bit.ly/PNPSEGuide)

Implementing the Commission  
on Cancer Standard: Patient  
Navigation Process

[bit.ly/CoCPNRoadMap](http://bit.ly/CoCPNRoadMap)



# National Cancer Survivorship Resource Center

- Collaboration between ACS and GWCC 2010-2015
- Developed tools for:
  - Cancer survivors and caregivers
  - Health care professionals
  - Policy and advocacy community



<https://www.cancer.org/health-care-professionals/national-cancer-survivorship-resource-center.html>

# Supporting Cancer Survivor Care



- No-cost, self-paced, online continuing education program
- Educates primary care providers about how to better understand and care for cancer survivors
- CE offered to physicians, nurses and CHES®



# E-Learning Series Topics

## **Module 1 (Launched 2013, Updated 2019)**

- The Current State of Survivorship Care and the Role of Primary Care Providers

## **Module 2 (Launched 2013, Updated 2019)**

- Late Effects of Cancer and its Treatments: Managing Comorbidities and Coordinating with Specialty Providers

## **Module 3 (Launched April 2013)**

- Late Effects of Cancer and its Treatment: Meeting the Psychosocial Health Care Needs of Survivors

# E-Learning Series Topics

## **Module 4 (Launched December 2013)**

- The Importance of Prevention in Cancer Survivorship: Empowering Survivors to Live Well

## **Module 5 (Launched 2013, Updated in 2019)**

- A Team Approach: Survivorship Care Coordination
  - Advancing Patient-Centered Cancer Survivorship Care (NEW October 2019)

## **Module 6 (Launched April 2014)**

- Cancer Recovery and Rehabilitation

# E-Learning Series Topics

## **Module 7 (Launched July 2014)**

- Spotlight on Prostate Cancer Survivorship

## **Module 8 (Launched September 2015)**

- Spotlight on Colorectal Cancer Survivorship

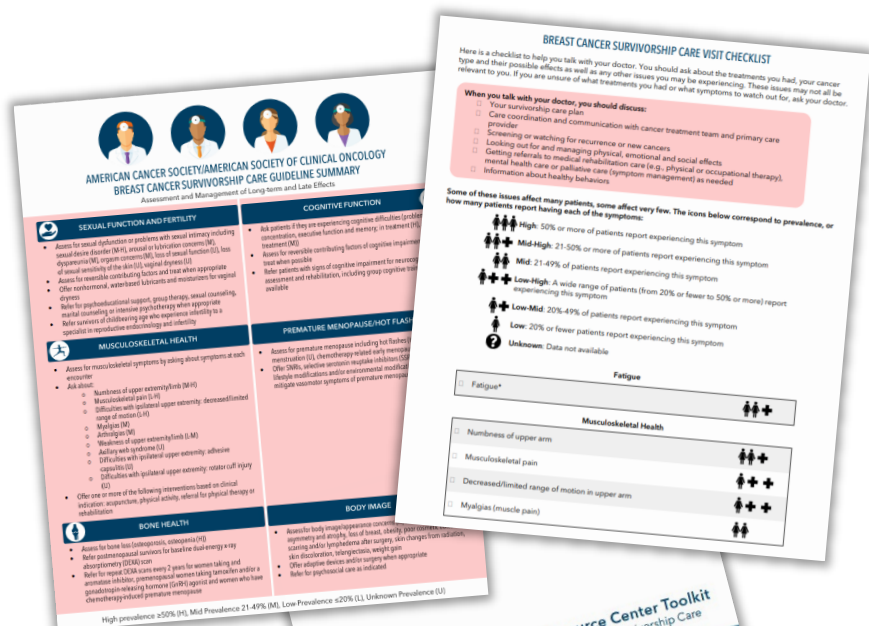
## **Module 9 (December 2015; Updated 2018)**

- Spotlight on Breast Cancer Survivorship

## **Module 10 (Launched March 2016)**

- Spotlight on Head and Neck Cancer Survivorship

# Supporting Cancer Survivor Care



## Topics:

- General survivorship
- Breast
- Colorectal
- Head and Neck
- Prostate

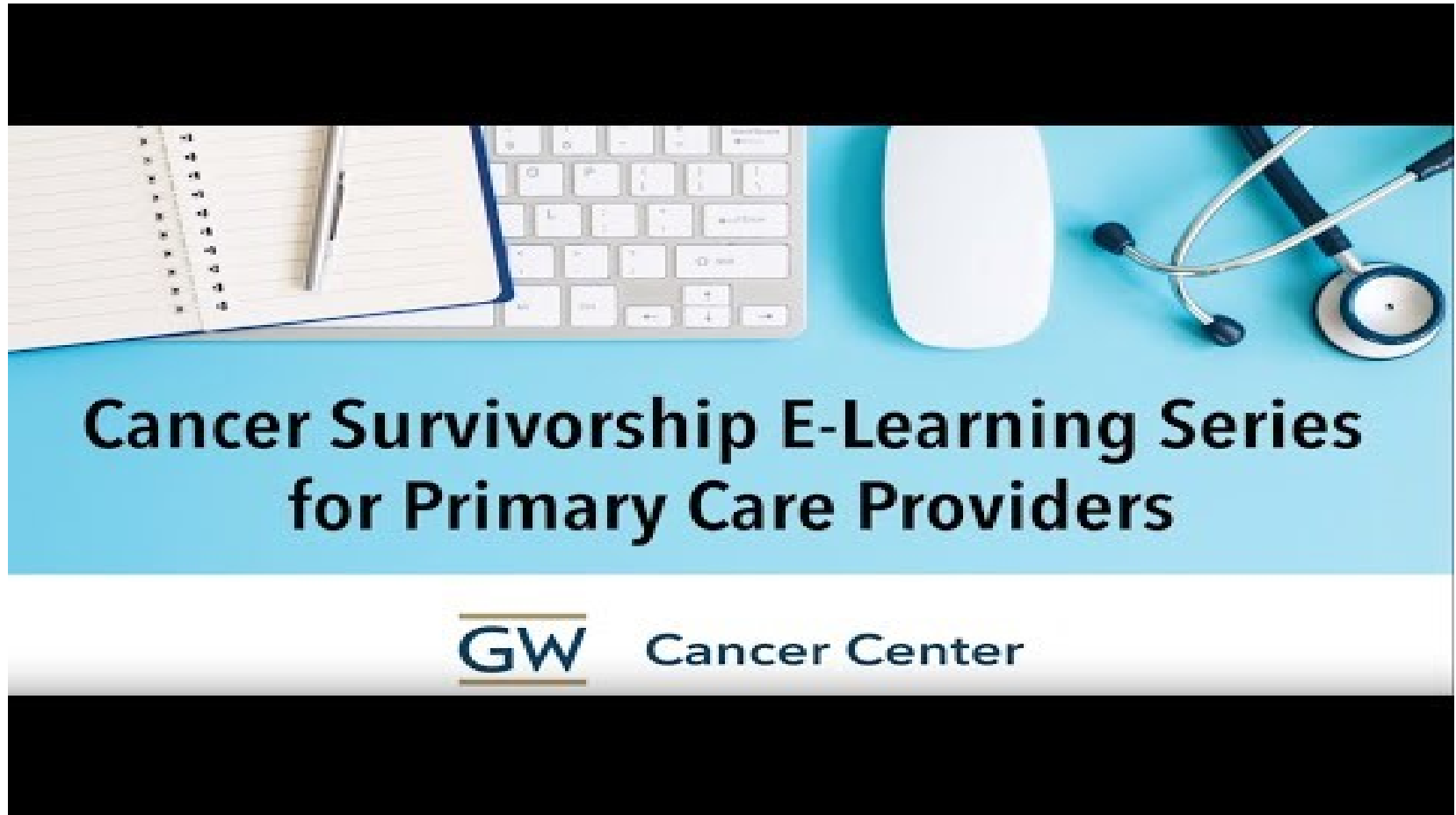
## Tools:

- Clinical guideline summary & checklists
- Patient checklists
- Slide deck to promote survivorship guidelines and resources

[bit.ly/NCSRCToolkit](http://bit.ly/NCSRCToolkit)

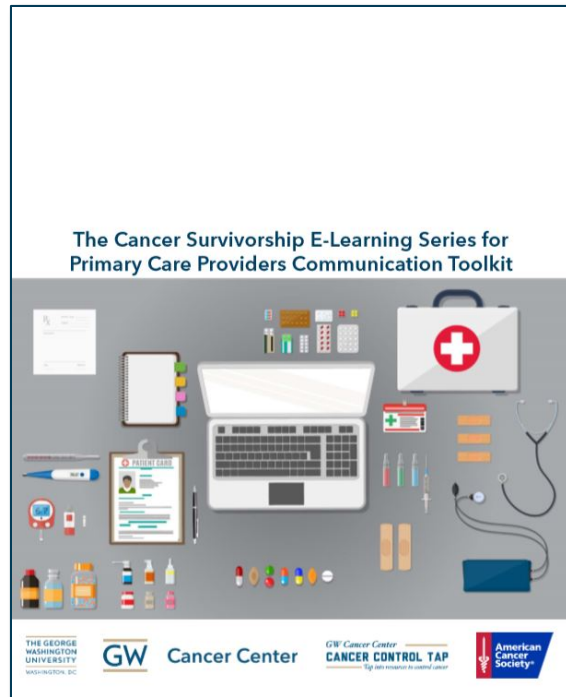


# Promote Survivorship Education for Clinicians

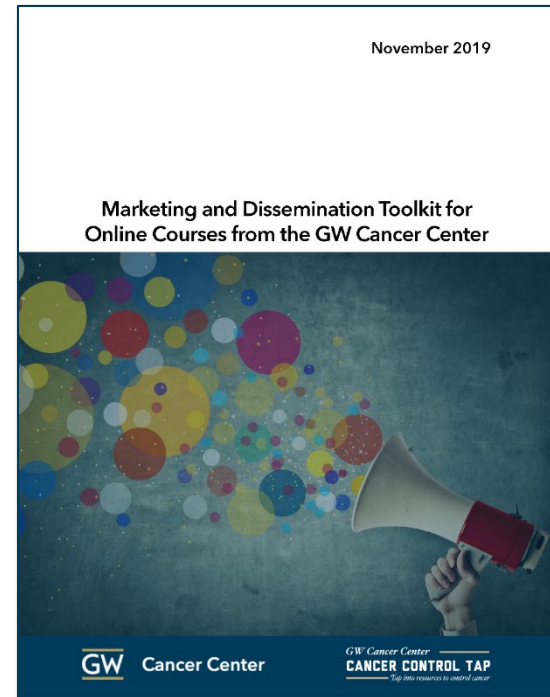


[bit.ly/E-SeriesPromoVid](http://bit.ly/E-SeriesPromoVid)

# Promote Survivorship Education for Clinicians



[bit.ly/E-SeriesToolkit2018ACS](https://bit.ly/E-SeriesToolkit2018ACS)



*Coming very soon!*

***Coming Soon!***

# **E-Learning Series Annual Report 2019**

*When?* Release end of January 2020

*Why?* Support programs/coalitions to meet reporting requirements on E-Learning Series outcomes for 1701 supplement

*What is included?* Aggregate demographics and learning outcomes as well as state, tribe and territory learner counts (reporting period January 1-December 2019) plus baseline learner counts (2018)

# Annual Report Overview: Demographics

- Stratified by primary care and oncology care
- Will include self-reported:
  - Gender
  - Race
  - Ethnicity
  - Community served (e.g., rural, suburban, urban)
  - Practice site (e.g., hospital, outpatient)
  - Profession (physician, nurse, patient navigator)



# Annual Report Overview: Learning Outcomes

Presented by module:

- Self-reported confidence to meet learning objectives (mean before and after module)
- Paired sample t-test for statistically significant change between means
- Percent of learners reporting increase in knowledge, intention to change practice and increase in skills at end of module

# Learner Counts: Tables for 2019 & 2018 Baseline

**Table: 2019 Primary and Oncology Care Learner Counts by State, Tribe or Territory**

State/Tribe/Territory	M1 (PCP)	M1 (ONC)	M2 (PCP)	M2 (ONC)	M3 (PCP)	M3 (ONC)	M4 (PCP)	M4 (ONC)	M5 (PCP)	M5 (ONC)	M6 (PCP)	M6 (ONC)	M7 (PCP)	M7 (ONC)	M8 (PCP)	M8 (ONC)	M9 (PCP)	M9 (ONC)	M10 (PCP)	M10 (ONC)	Total Unique
Name of State/Tribe/Territory (Alphabetical Order)	1	1	0	0	0	1	0	2	0	4	0	3	0	0	0	0	0	0	0	0	8
Name of State/Tribe/Territory (Alphabetical Order)	0	0	0	0	0	0	0	0	0	0	0	0	0	0	0	0	0	0	0	0	0

# E-Learning Series Outcomes

Journal of Cancer Education  
<https://doi.org/10.1007/s13187-018-1453-2>



## Initial Outcomes of an Online Continuing Education Series Focused on Post-treatment Cancer Survivorship Care

Allison Harvey<sup>1</sup> · Yuqing Zhang<sup>1</sup> · Serena Phillips<sup>1</sup> · Rhea Suarez<sup>1</sup> · Laura Dekle<sup>1</sup> · Aubrey Villalobos<sup>1</sup> · Mandi L. Pratt-Chapman<sup>1</sup>

© The Author(s) 2018

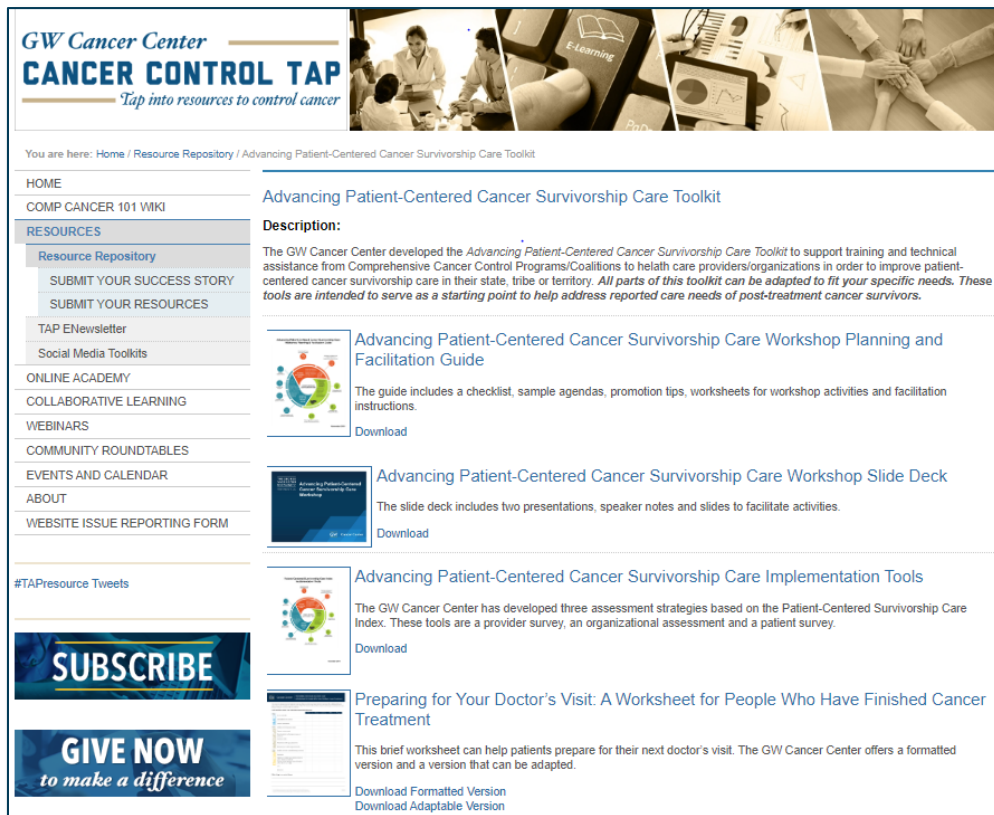
### Abstract

There is a growing number of post-treatment cancer survivors in the USA. Cancer survivors can have a variety of care needs and health care professionals must be prepared to meet these needs. The American Cancer Society (ACS) and the George Washington University (GW) Cancer Center developed *The Cancer Survivorship E-Learning Series for Primary Care Providers* (E-Learning Series) to address the need for cancer survivorship training and education among health care professionals with a focus on primary care. The GW Cancer Center analyzed evaluation data from 1341 learners who voluntarily completed a module pre- and post-assessment between April 15, 2013, and December 31, 2017, to assess differences in self-rated confidence, on a five-point Likert scale, to meet learning objectives. Descriptive statistics characterize the sample and paired samples *t* tests were used to assess any statistically significant differences from pre to post ( $p < 0.05$ ). Most learners were nurses (75.19%) and a majority of learners worked in oncology (74.68%) followed by primary care (11.60%). At pre-assessment, the module with the lowest mean self-confidence rating was 3.16 ( $SD = 0.81$ ) and the highest was 3.60 ( $SD = 0.73$ ). At post-assessment, module means in self-confidence rating ranged from 4.08 ( $SD = 0.46$ ) to 4.26 ( $SD = 0.56$ ). All differences were statistically significant ( $p < 0.0001$ ). Results highlight gaps in confidence among health care professionals regarding cancer survivorship care and the need for continuing education. There is also a need for additional uptake of the E-Learning Series among primary care providers. Results suggest that the E-Learning Series is an effective educational tool that increases learners' confidence in providing cancer survivorship care.

**Keywords** Cancer survivorship · Comprehensive cancer control · Health care professional education · Evidence-based initiatives

<https://doi.org/10.1007/s13187-018-1453-2>

# Advancing Patient-Centered Cancer Survivorship Care Toolkit



**GW Cancer Center**  
**CANCER CONTROL TAP**  
*Tap into resources to control cancer*

You are here: Home / Resource Repository / Advancing Patient-Centered Cancer Survivorship Care Toolkit

HOME  
COMP CANCER 101 WIKI  
RESOURCES  
Resource Repository  
SUBMIT YOUR SUCCESS STORY  
SUBMIT YOUR RESOURCES  
TAP ENewsletter  
Social Media Toolkits  
ONLINE ACADEMY  
COLLABORATIVE LEARNING  
WEBINARS  
COMMUNITY ROUNDTABLES  
EVENTS AND CALENDAR  
ABOUT  
WEBSITE ISSUE REPORTING FORM

#TAPresource Tweets

**SUBSCRIBE**

**GIVE NOW**  
*to make a difference*

## Advancing Patient-Centered Cancer Survivorship Care Toolkit

**Description:**  
The GW Cancer Center developed the *Advancing Patient-Centered Cancer Survivorship Care Toolkit* to support training and technical assistance from Comprehensive Cancer Control Programs/Coalitions to health care providers/organizations in order to improve patient-centered cancer survivorship care in their state, tribe or territory. *All parts of this toolkit can be adapted to fit your specific needs. These tools are intended to serve as a starting point to help address reported care needs of post-treatment cancer survivors.*

### Advancing Patient-Centered Cancer Survivorship Care Workshop Planning and Facilitation Guide

The guide includes a checklist, sample agendas, promotion tips, worksheets for workshop activities and facilitation instructions.

Download

### Advancing Patient-Centered Cancer Survivorship Care Workshop Slide Deck

The slide deck includes two presentations, speaker notes and slides to facilitate activities.

Download

### Advancing Patient-Centered Cancer Survivorship Care Implementation Tools

The GW Cancer Center has developed three assessment strategies based on the Patient-Centered Survivorship Care Index. These tools are a provider survey, an organizational assessment and a patient survey.

Download

### Preparing for Your Doctor's Visit: A Worksheet for People Who Have Finished Cancer Treatment

This brief worksheet can help patients prepare for their next doctor's visit. The GW Cancer Center offers a formatted version and a version that can be adapted.

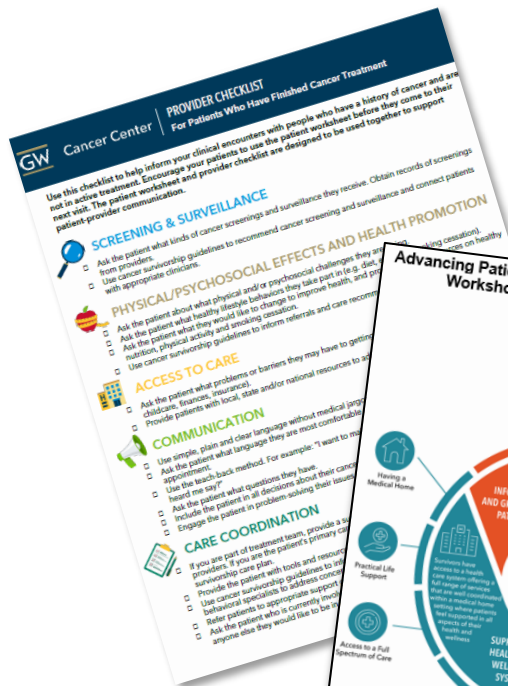
Download Formatted Version  
Download Adaptable Version

[bit.ly/AdvancingCancerSurvivorshipCareToolkit2019](https://bit.ly/AdvancingCancerSurvivorshipCareToolkit2019)

*Development of the toolkit and companion module was funded through the Patient-Centered Outcomes Research Institute (PCORI) Eugene Washington PCORI Engagement Award (EA #12744).*



# Advancing Patient-Centered Cancer Survivorship Care Toolkit



	Excellent	Above average	Average	Below average	Very poor	Not sure
Cancer survivors receive emotional and social support.						
Cancer survivors receive information and resources about expectations post-treatment.						
Cancer survivors are empowered and engaged.						
Clinicians are supportive and prepared.						
There is meaningful communication between clinicians and cancer survivors.						
There is care coordination and transitions across care providers.						
Cancer survivors have the full spectrum of care.						
Cancer survivors have health insurance and practical life support.						
Cancer survivors have a medical home.						



# Resources for Communication, Cultural Competence, Systems Change

Online Training: Together Equitable Accessible Meaningful (TEAM)

Visit: [GWCCAcademy.org](https://GWCCAcademy.org)

“I want you to know” Patient Cards (English, Spanish, simplified Chinese)

[bit.ly/TEAMPatientCards](https://bit.ly/TEAMPatientCards)

“Practice Patient-Centered Care” Clinic Posters (modifiable branding)

[bit.ly/TEAMProviderPosters](https://bit.ly/TEAMProviderPosters)

“You Are Welcome Here” Clinic Posters (modifiable branding)

[bit.ly/YouAreWelcomePosters](https://bit.ly/YouAreWelcomePosters)



# Resources for LGBTQ Affirming Cancer Care

Clinician CE: Addressing the Need for LGBTQ-Affirming Cancer Care: A Focus on Sexual and Gender Minority Prostate Cancer Survivors

Visit: [GWCCacademy.org](http://GWCCacademy.org)

Companion provider resource

[bit.ly/LGBTQIPrCaCareGuide](http://bit.ly/LGBTQIPrCaCareGuide)

Patient education materials for MSM and Transgender women

[bit.ly/MSMPrCaFactSheet](http://bit.ly/MSMPrCaFactSheet)

[bit.ly/TransPrCaFactSheet](http://bit.ly/TransPrCaFactSheet)



# Keep in Touch

*Monthly Cancer Control TA Periodical:* [bit.ly/TAPenews](https://bit.ly/TAPenews)

*Monthly Patient Navigation and Survivorship E-Newsletter:*  
[bit.ly/PNSurvEnews](https://bit.ly/PNSurvEnews)

Follow us on Twitter: [@GWCancer](https://twitter.com/GWCancer)



PI: Mandi Pratt-Chapman: [mandi@gwu.edu](mailto:mandi@gwu.edu)

PD: Aubrey Villalobos: [avillalobos@gwu.edu](mailto:avillalobos@gwu.edu)

PM: Mohammad Khalaf: [mkhalaf@gwu.edu](mailto:mkhalaf@gwu.edu)

